



MOTILE

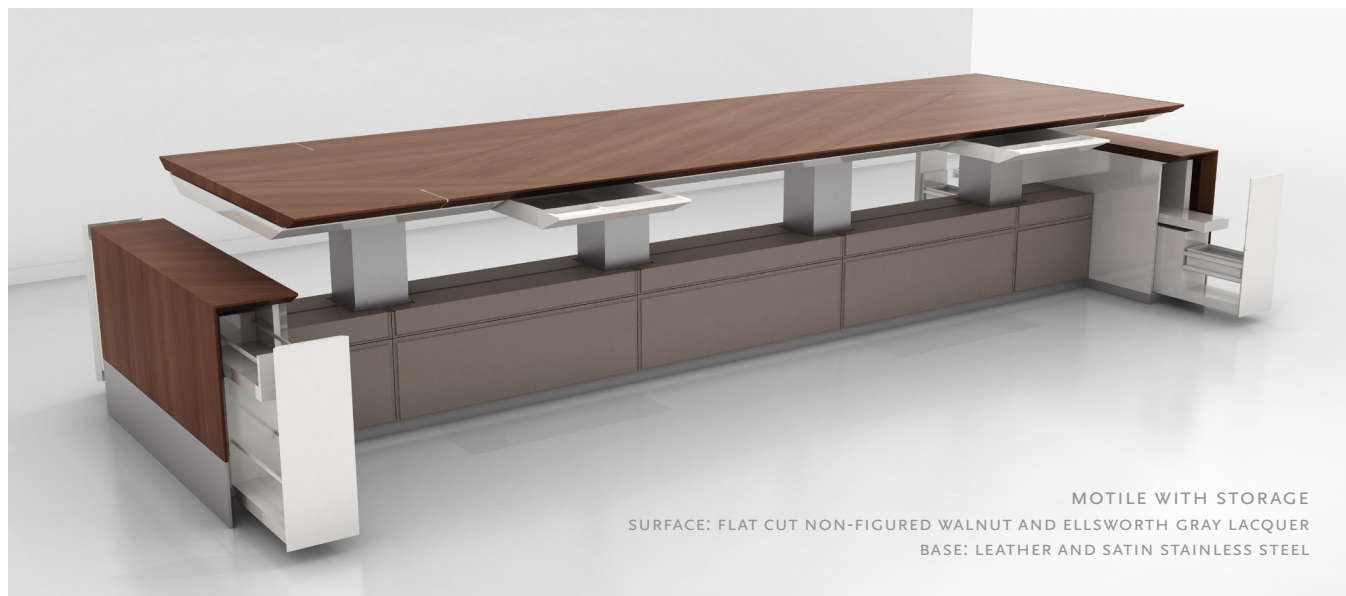
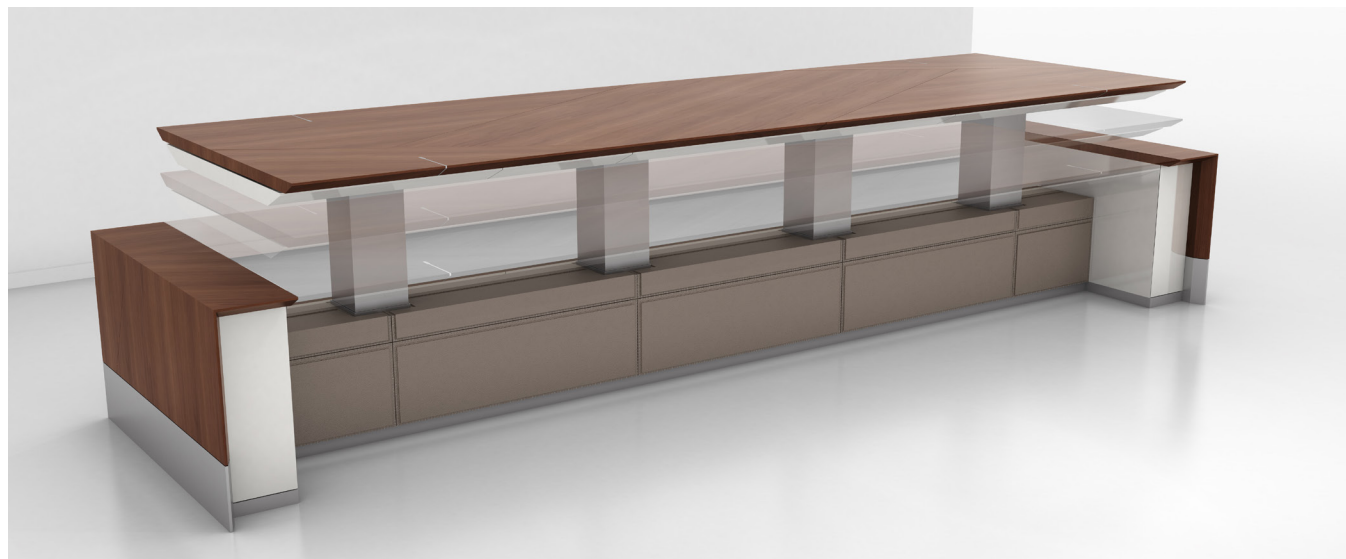
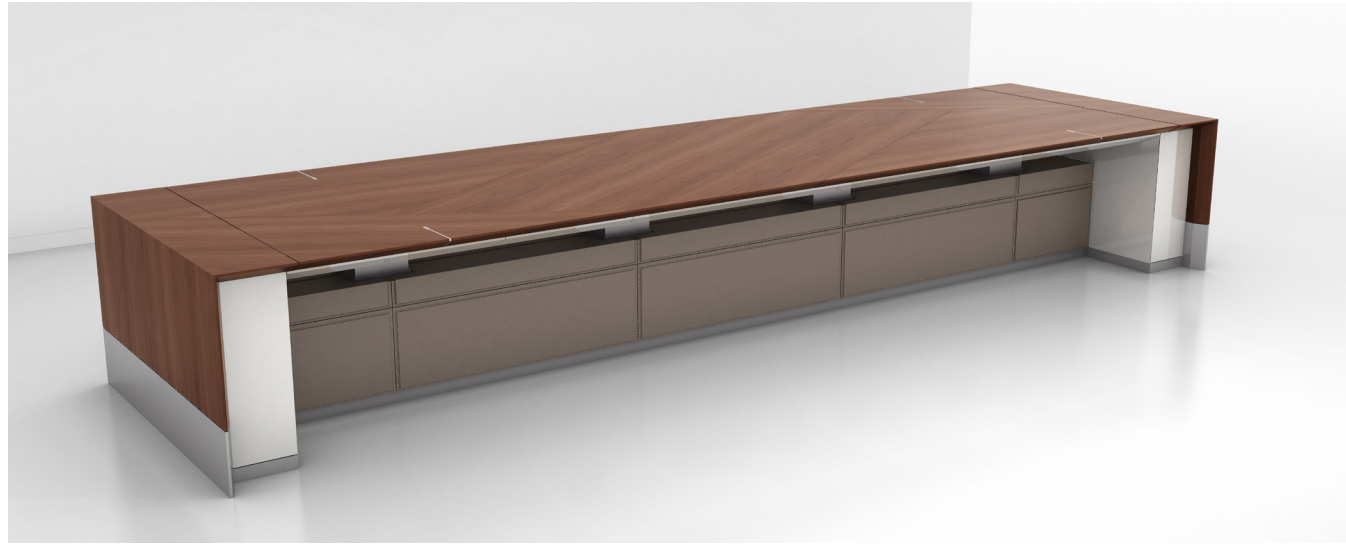
MOTILE

By Kelie Mayfield & Erick Ragni, MaRS

Designed by Kelie Mayfield and Erick Ragni of MaRS for Decca Contract, Motile fosters collaboration and adaptability for group think tanks, conferencing and work surface solutions. Motile's innovative, height adjustable surface transforms from an elegant conference table to a seated or standing workspace for up to four people. With surface level charge spots for smart phones to customizable storage options and power drawers, Motile moves freely to accommodate dynamic work styles. Finishes are easily personalized with dozens of veneer, leather and lacquer finishes.



MOTILE WITH STORAGE
SURFACE: FLAT CUT NON-FIGURED WALNUT AND ELLSWORTH GRAY LACQUER
BASE: LEATHER AND SATIN STAINLESS STEEL



MOTILE WITH STORAGE
SURFACE: FLAT CUT NON-FIGURED WALNUT AND ELLSWORTH GRAY LACQUER
BASE: LEATHER AND SATIN STAINLESS STEEL



MOTILE WITH DECCACHARGE
WORKSURFACE WITH EMBEDDED WIRELESS CHARGE SPOT



MOTILE POWER ACCESS



MOTILE WITH STORAGE
SURFACE: EV QUARTER CUT LIGHT GRAY OAK AND ELLSWORTH GRAY LACQUER
BASE: LEATHER AND DARK BRONZE POWDER COATED METAL



Kelie Mayfield & Erick Ragni, MaRS
HOUSTON

MaRS, Mayfield and Ragni Studio, is an architectural design studio founded by a group of highly experienced, award-winning individuals who have come together after distinguished careers in some of the country's leading private practices. Collectively, studio principals Kelie Mayfield and Erick Ragni offer a unique breadth of diverse knowledge and a passion for collaboration that has been the catalyst for innovative and memorable spaces around the world.

MaRS is dedicated to bringing beauty, function, innovation and design integrity to the modern built environment. The firm also custom designs furniture, carpets, wall coverings, provides graphic design and branding services as well as curates artwork and accessories to deliver holistically conceived, fully realized environments.